

**RESTRICTED RESERVE "A"**  
**33.5767 ACRES**  
 RESTRICTED TO PRIVATE LAKE USE FROM ELEVATION 102 AND BELOW.  
 THE AREA BETWEEN ELEVATION 102 AND 103.2 IS RESERVED FOR A  
 PUBLIC DRAINAGE EASEMENT AND DETENTION PURPOSES.

ALL SIDE LOT DRAINAGE EASEMENTS ARE PUBLIC DRAINAGE EASEMENTS  
 TO BE MAINTAINED BY THE ADJACENT LAND OWNERS OR  
 HOME OWNERS ASSOCIATION.

DESIGN POOL ELEVATION = 102.0  
 DESIGN 100 YEAR WSE = 103.2

**DESCRIPTION OF BENCHMARK**

Elevations shown are at an assumed datum of 100.00.  
 The assumed datum is tied to Harris County Flood Control  
 Reference Marker No. RM 157 located on east side of bridge on  
 Cypress-Rosehill Road over Little Cypress Creek approximately  
 3000 feet south of Grant Road, Elev. = 164.03', 1973 datum.

**I.B.M.**

Chisled square located on south end of headwall east side of  
 Cypress-Rosehill Road approximately 25 feet south of northwest  
 corner of subject tract, elev. = 166.60

To obtain actual 1973 reference datum from the assumed plan  
 datum, add 64.95 to the assumed plan datum.

**DENITION SUMMARY**

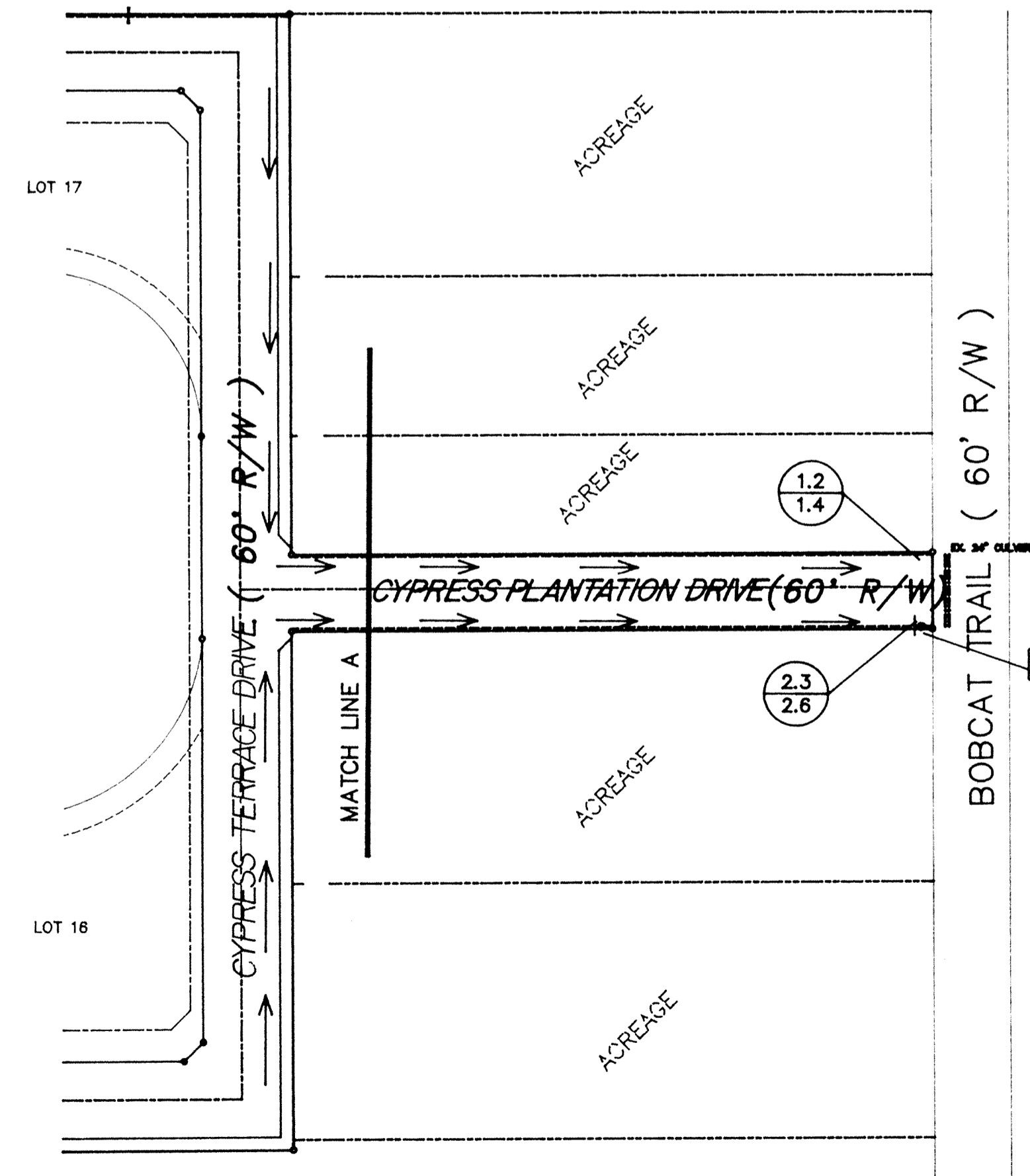
1. Area Served = 62.2 acres
2. Detention Storage Rate = Cs = 0.58 acre-feet / acre
3. Detention Storage Volume Required = 36 acre-feet
4. Detention Storage Volume Provided = 37 acre-feet  
 Note: The storage volume is provided in the lake  
 between the elevations 102.0 and 103.2.
5. Maximum Design Water Surface Elevation = 103.2 (100 yr.)
6. Maximum Outflow Rate Allowed = 30 cfs
7. Maximum Outflow Rate Provided = 30 cfs
8. Restrictor Size : The restrictor is a horizontal crested weir.  
 Length = 7.2' Height = 1.2'

**GENERAL DRAINAGE NOTES**

Runoff calculations are based on the City of Houston Curves.  
 Curve 6 was used for existing condition calculations.  
 Curve 4 was used for proposed condition calculations.

The flow in the proposed ditches does not exceed 3 fps.

All drainage easements shall be hydro-mulch seeded as per  
 Harris County Flood Control District specification entitled  
 "Hydro-Mulch" or approved equal.



**LEGEND**

- 0.3 / 0.3 AREA FLOW
- DRAINAGE BOUNDARY
- RI-1 TRAFFIC SIGN

INTERPOSE NO OBJECTION  
 FINAL APPROVAL BY OTHERS

*J. A. Parker*  
 Harris County Flood Control District

Date: 8/26/91

THE ABOVE SIGNATURE VALID  
 FOR ONE (1) YEAR ONLY

\* City of Houston approval  
 valid only with T.D.W. letter  
 of approval.

*Robert T. Deden*  
 8/12/91

APPROVED:	COUNTY ENGINEER
APPROVED:	ENGINEER IN CHARGE
HARRIS COUNTY FLOOD CONTROL DISTRICT	
DATE	
THE ABOVE SIGNATURE VALID FOR ONE (1) YEAR ONLY	
APPROVALS	
WATER DESIGN	PAYING DEPT.
WATER QUALITY	STORM SEWERS
ASSISTANT DIRECTOR-WATER DIVISION	SANITARY SEWERS
	CHIEF ENGINEER-SEWER DIVISION
TRAFFIC & TRANSPORTATION	CITY PLANNING & ZONING DEPARTMENT
ASSISTANT DIRECTOR OF PUBLIC WORKS	DIRECTOR OF PUBLIC WORKS
ROBERT T. DEDEN, SERVICES	9328 WESTVIEW DRIVE HOUSTON, TX 77055 713-461-8822
<b>THE LAKES AT CYPRESS HILL</b>	
<b>DRAINAGE OVERALL TOPOGRAPHY AND TRAFFIC SIGNING</b>	
DATE:	SCALE: AS SHOWN
ACAD FILE:	JOB NO:
SHEET 2 OF 14	